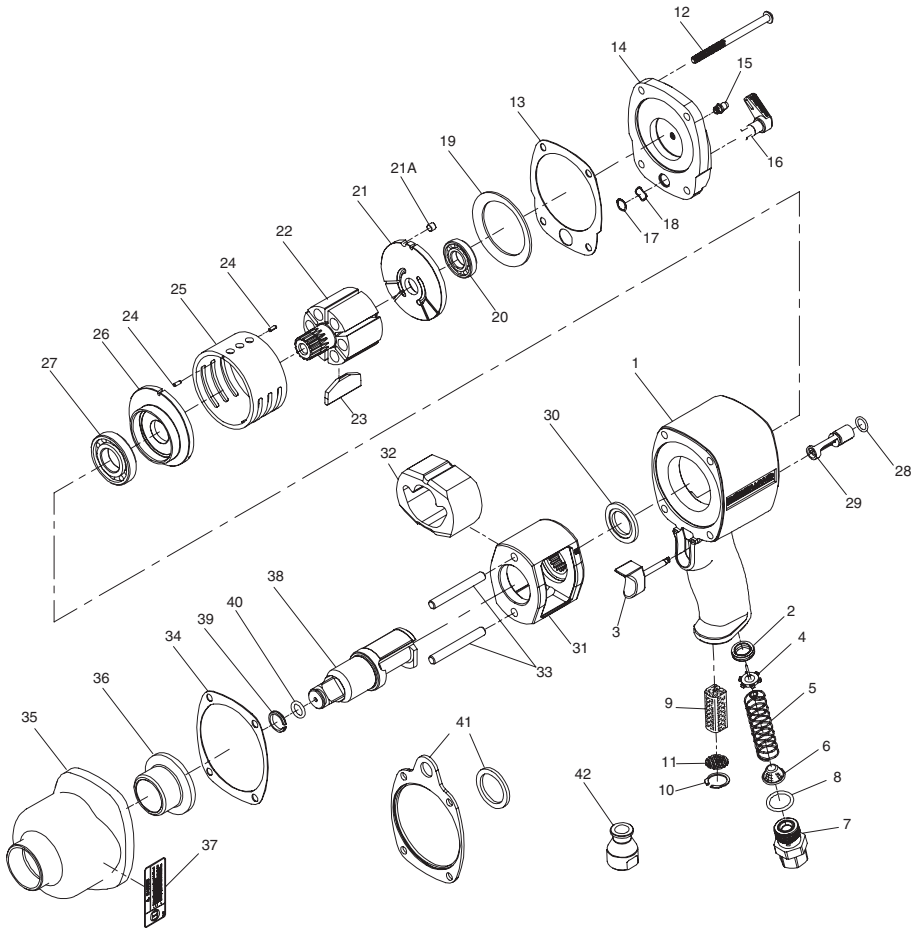


2161 and 2171 Air Impact Wrench Exploded Diagram



(Dwg. TPA1607-1)

## 2161 and 2171 Air Impact Wrench Parts List

| Item | Part Description             | Part Number | Item | Part Description                      | Part Number  |
|------|------------------------------|-------------|------|---------------------------------------|--------------|
|      | Motor Housing Assembly       | 2161-A40    | 27   | Front Rotor Bearing                   | 834-24       |
| 1    | Motor Housing                | 2161-B40    | • 28 | Reverse Valve O-Ring                  | 023446       |
| 2    | Throttle Valve Seat          | DG230-303   | 29   | Reverse Valve                         | 2161-329     |
| 3    | Trigger Assembly             | 2161-A93    | 30   | Hammer Frame Washer                   | 2161-706     |
| 4    | Throttle Valve               | 2921-302    | 31   | Hammer Frame                          | 2910-703A    |
| 5    | Throttle Valve Spring        | 2161-51     | 32   | Hammer                                | 2161-724     |
| 6    | Air Strainer Screen          | 834-61      | 33   | Hammer Pin (2)                        | 2910-704     |
| 7    | Inlet Bushing Assembly       | 2161-A465A  | • 34 | Hammer Case Gasket                    | 2161-36      |
| 8    | Inlet Bushing O-Ring         | AF120-290   | 35   | Hammer Case Assembly                  |              |
| 9    | Muffler Element              | 202-311     |      | for 2161, 2161-6, and 2171            | 2161-A727    |
| 10   | Retaining Ring               | 2161-118    |      | for 2161-EU, 2161-6-EU and 2171-EU    | 2161-EU-A727 |
| 11   | Exhaust Deflector            | 2161-23     | 36   | Hammer Case Bushing                   | 2161-641     |
| 12   | Backcap Bolt (4)             | 2161-638    | 37   | Warning Label                         |              |
| • 13 | Backcap Gasket               | 2161-739    |      | for 2161, 2161-6 and 2171             | WARNING-2-99 |
|      | Backcap Assembly             | 2161-A102   |      | for 2161-EU, 2161-6-EU and 2171-EU    | EU-99        |
| 14   | Backcap                      | 2161-102    | 38   | Anvil                                 |              |
| 15   | Grease Fitting               | R1-188      |      | 3/4" extended (for 2161, 2161-EU)     | 1710-A626A   |
| 16   | Reverse Lever                | 2161-658    |      | 3/4" extended (for 2161-6, 2161-6-EU) | 265-A626-6   |
| 17   | Reverse Lever Snap Ring      | 2161-28     |      | 1" extended (for 2171, 2171-EU)       | 275-A626     |
| 18   | Reverse Lever Spring         | 2161-278    | 39   | Socket Retainer                       |              |
| 19   | Motor Clamp Washer           | 2161-207    |      | 3/4" extended (for 2161, 2161-EU,     |              |
| 20   | Rear Rotor Bearing           | 4E-510      |      | 2161-6, 2161-6-EU)                    | 908B5-918    |
| 21   | Rear End Plate               | 2161-12     |      | 1" extended (for 2171, 2171-EU)       | 910E5-918    |
| 21A  | Locating Pin                 | 2920-74     | 40   | Socket Retainer O-Ring                |              |
| 22   | Rotor                        | 2910B-53    |      | 3/4" extended (for 2161, 2161-EU,     |              |
| • 23 | Vane Packet (set of 6 Vanes) | 2910-42-6   |      | 2161-6, 2161-6-EU)                    | AF120-289    |
| 24   | Cylinder Dowel (2)           | JC3350-538  |      | 1" extended (for 2171, 2171-EU)       | R4-210       |
| 25   | Cylinder                     | 2161-3      | 41   | Hanger Kit                            | 2161-366     |
| 26   | Front End Plate              | 2161-11     | 42   | Piped-Away Exhaust                    | 2161-123     |

• To keep downtime to a minimum, it is desirable to have on hand certain repair parts. We recommend that you stock one (pair or set) of each part indicated by a (\*) for every four tools in service.

## Parts and Maintenance

When the life of the tool has expired, it is recommended that the tool be disassembled, degreased and parts be separated by material so that they can be recycled.

Tool repair and maintenance should only be carried out by an authorized Service Center. Refer all communications to the nearest **Ingersoll-Rand** Office or Distributor.

## Related Documentation

For additional information refer to:  
 Air Impact Wrench Product Safety Information Manual 04580916,  
 Air Impact Wrench Product Information Manual 04584926.

Manuals can be downloaded from [www.irtools.com](http://www.irtools.com).



[www.irtools.com](http://www.irtools.com)

© 2004 Ingersoll-Rand Company

Form 04584629

Edition 1

November 2004